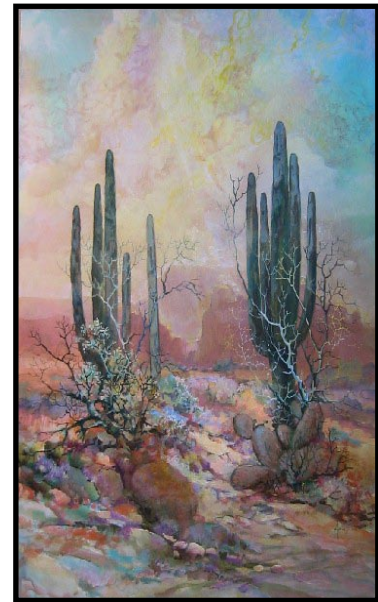




adinSHADE

April 1st
7-9pm

Unique handling of space and a variety of textures compose each painting of Adin Shade's. His watercolor technique involving patterns created by dripping paint onto the surface of the paper, define his signature look of soft hues in a tranquil form of beauty. Adin's work displays a feeling of mystical depth and warmth found both in his Native American images and his textured landscapes.



Joan Cawley Gallery

A LEADING GALLERY IN CONTEMPORARY
SOUTHWEST ART est. 1974